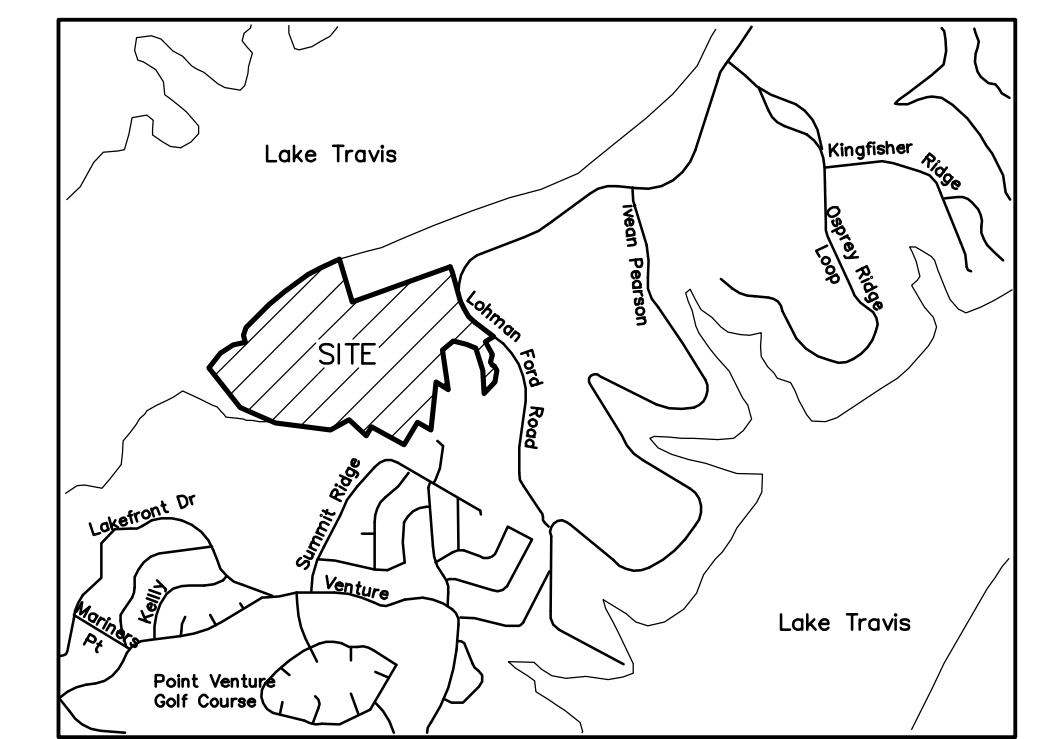
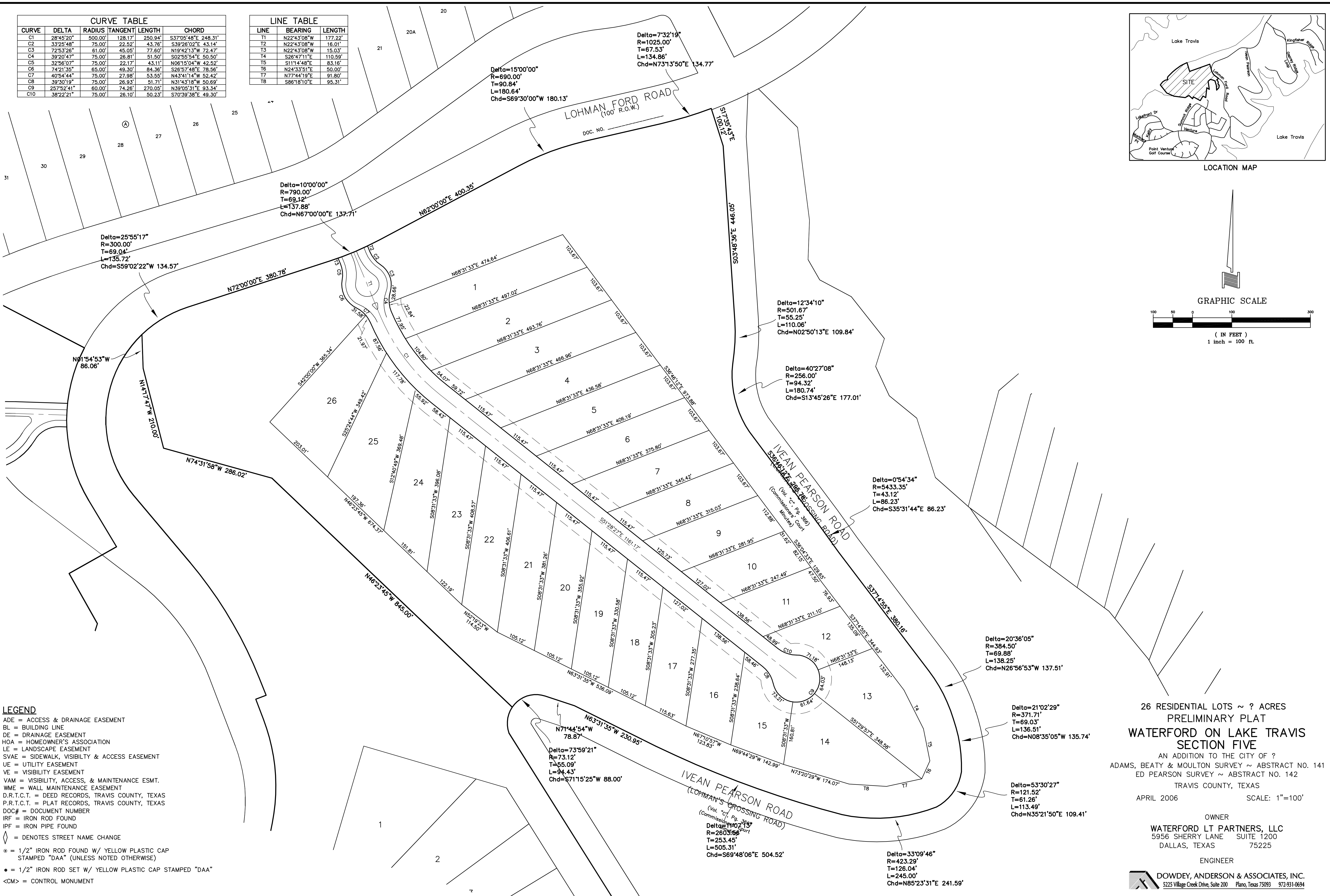
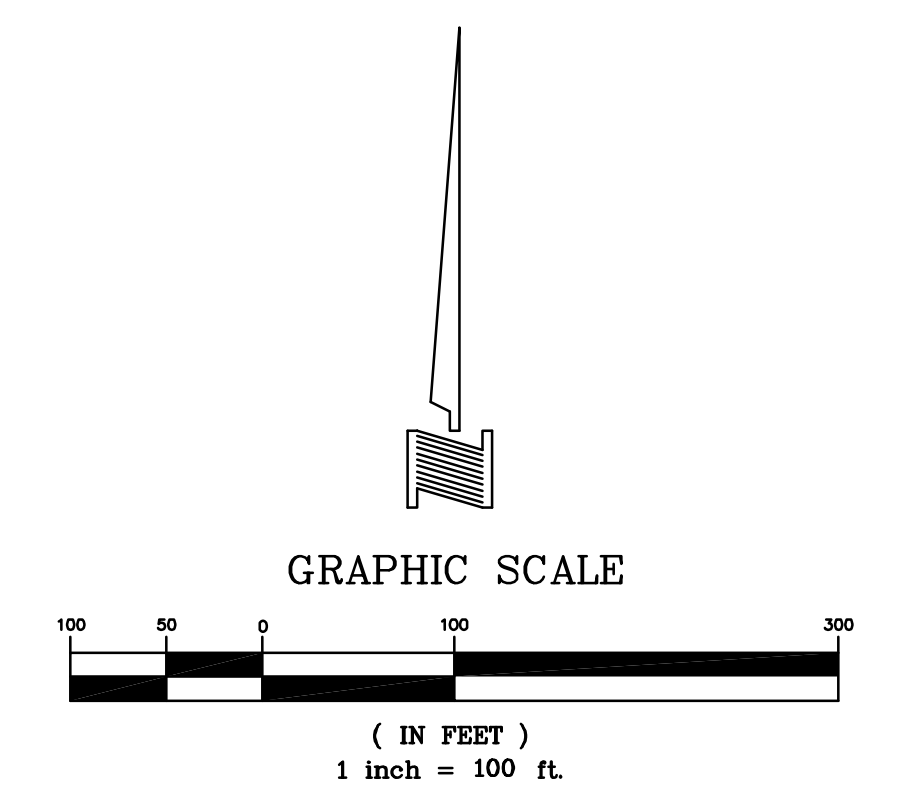


CURVE	DELTA	RADIUS	TANGENT LENGTH	CHORD
C1	28°45'20"	500.00'	128.17'	250.94'
C2	33°25'48"	75.00'	22.52'	43.76'
C3	72°53'26"	61.00'	45.05'	77.60'
C4	39°20'47"	75.00'	26.81'	51.50'
C5	32°56'07"	75.00'	22.17'	43.11'
C6	74°21'35"	65.00'	49.30'	84.36'
C7	40°54'44"	75.00'	27.98'	53.55'
C8	39°30'19"	75.00'	26.93'	51.71'
C9	25°52'41"	60.00'	74.26'	270.05'
C10	38°22'21"	75.00'	26.10'	50.23'

LINE	BEARING	LENGTH
T1	N22°43'08"W	177.22'
T2	N22°43'08"W	16.01'
T3	N22°43'08"W	15.03'
T4	S26°47'11"E	110.59'
T5	S11°14'48"E	83.16'
T6	N24°33'51"E	50.00'
T7	N77°44'19"E	91.80'
T8	S86°18'10"E	95.31'



LOCATION MAP



- LEGEND**
- ADE = ACCESS & DRAINAGE EASEMENT
 - BL = BUILDING LINE
 - DE = DRAINAGE EASEMENT
 - HOA = HOMEOWNER'S ASSOCIATION
 - LE = LANDSCAPE EASEMENT
 - SVAE = SIDEWALK, VISIBILITY & ACCESS EASEMENT
 - UE = UTILITY EASEMENT
 - VE = VISIBILITY EASEMENT
 - VAM = VISIBILITY, ACCESS, & MAINTENANCE ESMT.
 - WME = WALL MAINTENANCE EASEMENT
 - D.R.T.C.T. = DEED RECORDS, TRAVIS COUNTY, TEXAS
 - P.R.T.C.T. = PLAT RECORDS, TRAVIS COUNTY, TEXAS
 - DOC# = DOCUMENT NUMBER
 - IRF = IRON ROD FOUND
 - IPF = IRON PIPE FOUND
 - ◇ = DENOTES STREET NAME CHANGE
 - ⊙ = 1/2" IRON ROD FOUND W/ YELLOW PLASTIC CAP STAMPED "DAA" (UNLESS NOTED OTHERWISE)
 - = 1/2" IRON ROD SET W/ YELLOW PLASTIC CAP STAMPED "DAA"
 - <CM> = CONTROL MONUMENT

26 RESIDENTIAL LOTS ~ ? ACRES
PRELIMINARY PLAT
WATERFORD ON LAKE TRAVIS
SECTION FIVE
 AN ADDITION TO THE CITY OF ?
 ADAMS, BEATY & MOULTON SURVEY ~ ABSTRACT NO. 141
 ED PEARSON SURVEY ~ ABSTRACT NO. 142
 TRAVIS COUNTY, TEXAS
 APRIL 2006 SCALE: 1"=100'
 OWNER
WATERFORD LT PARTNERS, LLC
 5956 SHERRY LANE SUITE 1200
 DALLAS, TEXAS 75225
 ENGINEER

DOWDEY, ANDERSON & ASSOCIATES, INC.
 5225 Village Creek Drive, Suite 200 Plano, Texas 75093 972-931-0694